



460 Sauchiehall Street, Glasgow, G2 3JU

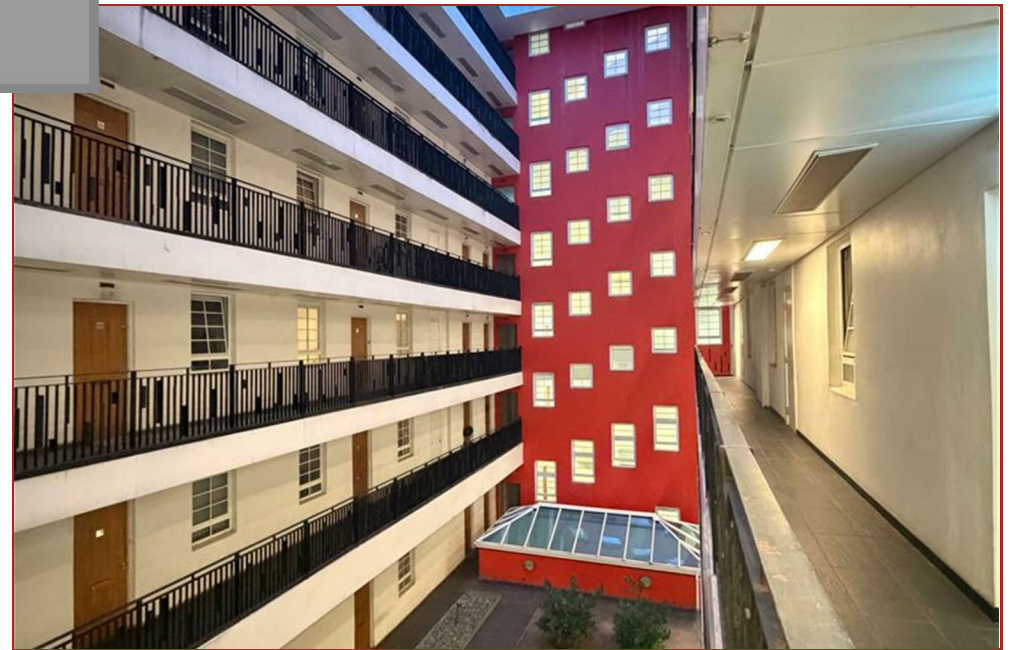
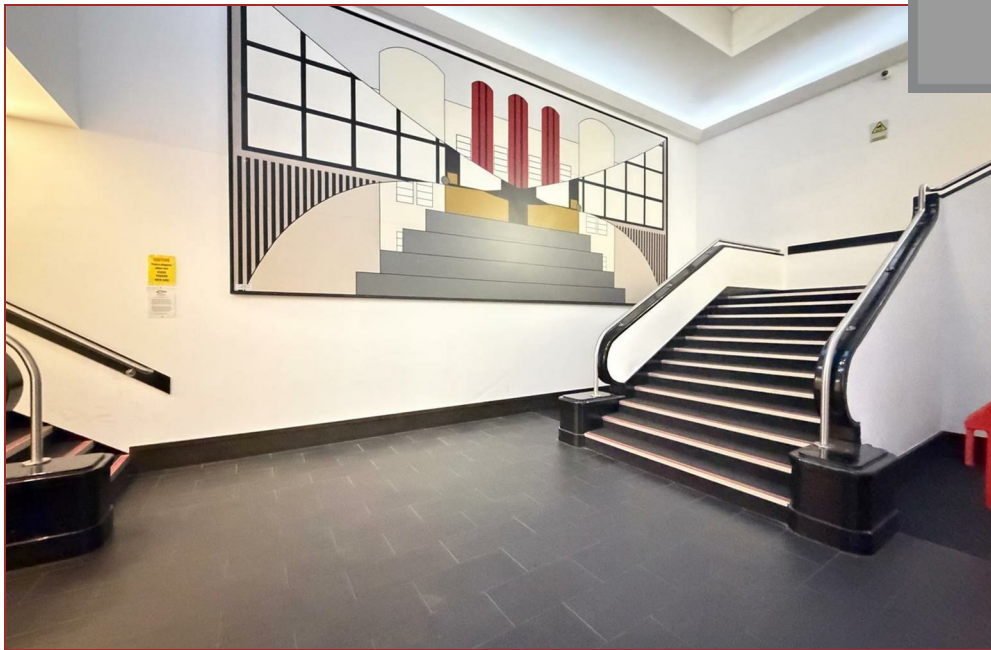


Viewing by appointment with Residence Uddingston

T: 01698 444222 | E: uddingston@residencestateagents.co.uk | A: 61-63 Main Street, Uddingston, G71 7EP



RESIDENCE





1 Bedrooms | 1 Public Room | 1 Bathroom

Set within the iconic B-listed Art Deco Beresford Building, this impressive third-floor apartment is one of the larger flats within the development and is presented in immaculate decorative order throughout.

Originally constructed in 1938, The Beresford is a landmark building steeped in history, having served as a hotel, offices and student accommodation before its comprehensive conversion in 2008 into 121 luxury apartments. Renowned for its architectural significance and notable past residents — including a visit from John F. Kennedy — the building combines distinctive character with modern city living.

The Beresford has recently benefited from an extensive refurbishment programme, including roof works and full external rendering, restoring the façade to its former Art Deco glory. The property occupies a prime position on Sauchiehall Street, which has also undergone major public-realm improvements as part of Glasgow's Avenues Project.

Internally, the flat offers generous and well-proportioned accommodation. The impressive communal entrance retains wonderful Art Deco architectural features. Within the flat itself, there's a bright open-plan lounge and dining area, which is complemented by a contemporary fitted kitchen incorporating integrated appliances. The spacious bedroom features fitted wardrobes, while the modern white shower room is finished to a high standard. Residents further benefit from a concierge service, lift access to all floors, underfloor heating, double glazing, a security door-entry system and well-maintained communal areas.

Ideally located on Sauchiehall Street near Charing Cross, the property enjoys immediate access to an excellent range of amenities. A Tesco Metro is located on the ground floor of the building, while the City Centre, International Financial Services District, Merchant City, Finnieston and the West End are all within easy reach, offering a wealth of shopping, cafés, wine bars and highly regarded restaurants.



635.07 sq ft | EER = C



RESIDENCE





Sauchiehall Street



Floor Plan measurements are approximate and are for illustrative purposes only.
While we do not doubt the floor plans accuracy, we make no guarantee, warranty or representation as to the accuracy and completeness of the floor plan. You or your advisors should conduct a careful, independent investigation of the property to determine to your satisfaction as to the suitability of the property for your space requirements.

Produced by Plush Plans Ltd

We believe these details to be accurate; however, they do not form any part of a contract. Fixtures and fittings are not included unless specified in the enclosed. Photographs are for general information and it must not be inferred that any item is included for sale with the property. All distances and measurements are approximate. Floorplans may not be to scale and are for illustration purposes only.